

Glynn Vivian Art Gallery Swansea

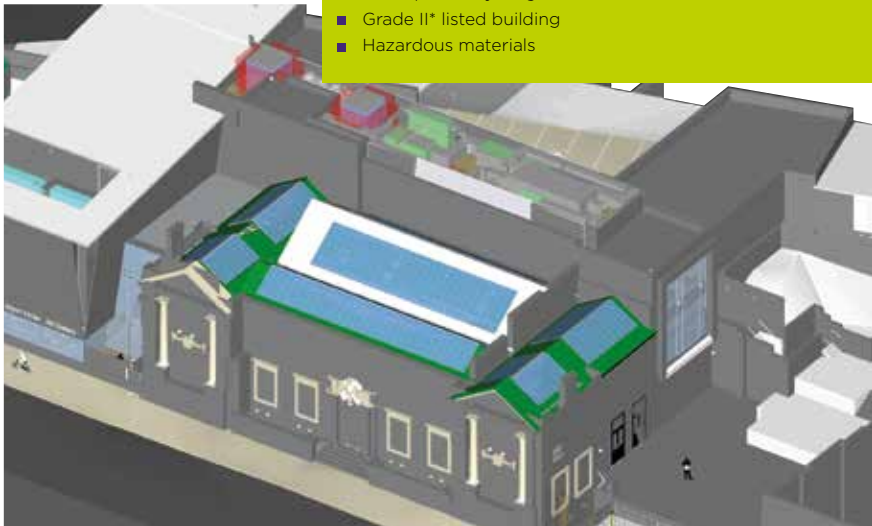


Client: City and County of Swansea
Contractor: John Weaver Contractors Ltd
Start Date: March 2014
End Date: Spring 2015
Anticipated waste arisings: approx 200m³



John Weaver (Contractors) Ltd is a project partner working with Constructing Excellence in Wales and Enabling Zero Waste to identify improvements in waste management during the restoration and refurbishment of the Glynn Vivian Art Gallery located on Alexandra Road, Swansea.

The property comprises a 1911 Grade II* listed Edwardian Art Gallery and includes a 1970s extension. A three storey link will be constructed providing a new ground level entrance with full public accessibility to link the two diverse buildings. The £5.3m scheme has been designed by the City County of Swansea. The ground floor will be used as a social space with enhanced accessibility, the second floor will be introduced as new flexible gallery space and the third floor will provide a specialist conservation studio and appropriate storage. A new loading bay and powered access is also proposed as part of the scheme.



Key Project Features and Predicted Waste Management Challenges

- A compact working site with restricted storage
- Steeply sloped site
- Close proximity neighbours
- Grade II* listed building
- Hazardous materials

Oriel Gelf Glynn Vivian Abertawe



Cleient: Dinas a Sir Abertawe
Contractwr: John Weaver Contractors Ltd
Dyddiad Cychwyn: Mawrth 2014
Dyddiad Cwblhau: Gwanwyn 2015
Gwastraff disgwyliedig: tua 200m²



Mae John Weaver (Contractors) Ltd yn gweithio mewn partneriaeth ag Adeiladu Arbenigrwydd yng Nghymru a Galluogi Dyfodol Diwastraff i adnabod gwelliannau mewn rheoli gwastraff yn ystod gwaith adfer ac adnewyddu Oriel Gelf Glynn Vivian yn Ffordd Alexandra, Abertawe.

Mae'r eiddo'n cynnwys Oriel Gelf Edwardaidd Gradd II* yn dyddio o 1911 ynghyd ag estyniad a godwyd yn y 1970au. Adeilid linc tri llawr a fydd yn darparu mynedfa newydd ar lefel y ddaear gan alluogi mynediad llawn i'r cyhoedd i ddau adeilad tra gwahanol i'w gilydd. Cafodd y cynllun £5.3m ei ddylunio gan Dinas a Sir Abertawe. Defnyddir y llawr daear fel gofod cymdeithasol gyda gwell mynediad. Cyflwynir yr ail lawr fel gofod arddangos hyblyg newydd a bydd y trydydd llawr yn cynnwys stiwdio gadwraeth arbenigol ynghyd â gofod priodol ar gyfer storio. Fel rhan o'r cynllun hefyd mae bwriad i ddarparu man llwytho/dadlwytho a mynedfa bŵer.

Nodweddion allweddol y prosiect a'r heriau rheoli gwastraff tebygol

- Gofod gweithio a storio yn brin
- Safle ar lethr serth
- Cymdodion yn agos iawn at yr adeilad
- Adeilad rhestredig Gradd II*
- Deunyddiau peryglus

