



# Cymoedd i'r Arfordir Valleys to Coast



# Darrin Davies

Executive Director of Development & Assets



# Robert Green

Development Manager



# Marcus Fookes

Delkii Pureblok



# Alun Lock

Director, Pentan Partnership



o'r Cymoedd i'r Arfordir  
from Valleys to Coast





Ffordd Yr Eglwys | North Cornelly, Bridgend

A small development with a BIG impact

# Delivering innovation

We're proud that our Ffordd Yr Eglwys development represented a **first for social housing in Wales using this system**

Speed was core to the brief to meet demand and draw down funding which was **achieved by Collaboration**

It was innovative not only in its planning, but in its design and construction too - and it was **achieved by working together**



Cymoedd i'r Arfordir  
Valleys to Coast

# The brief

Homelessness rose exponentially during the Pandemic

WG & BCBC called on Housing providers to deliver solutions

Provide emergency housing to meet immediate demand

Homes to be sustainable in performance and use

Extremely energy efficient, Target EPC A

Low environmental impact, and affordable to run

Minimise trades on site due to social distancing



Cymoedd i'r Arfordir  
Valleys to Coast

# The project

Transformed a brownfield site of homes in serious disrepair

Four one-bedroom two-storey homes, located in North Cornelly

Modern method with main components made off-site

Obtained planning and SAB quickly with support of BCBC

Extremely energy efficient, obtaining an EPC A rating

Low environmental impact, and affordable to run



Cymoedd i'r Arfordir  
Valleys to Coast



**Ffordd Yr Eglwys** | Construction timelapse

# The design

1 Bed Houses Alternative to flats

Able to provide private space per property

No living space above or below to reduce Noise

Footprint allows to increase density (benefit to larger sites)

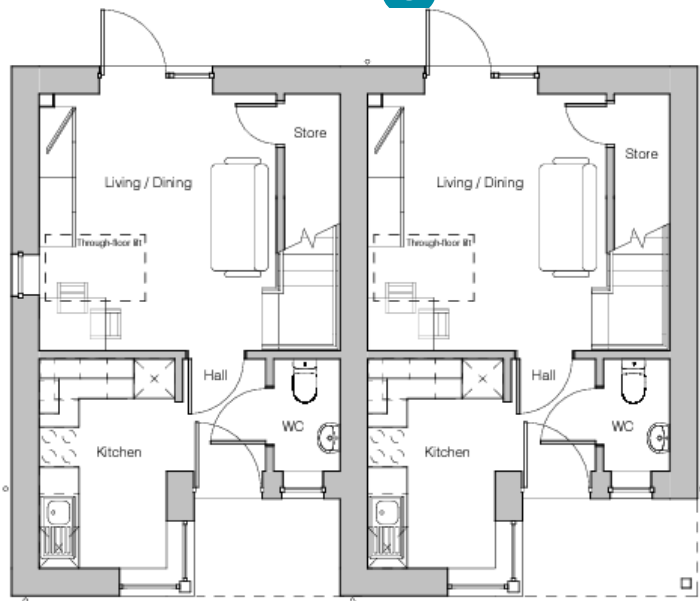
No habitable living space upstairs to eliminate overlooking



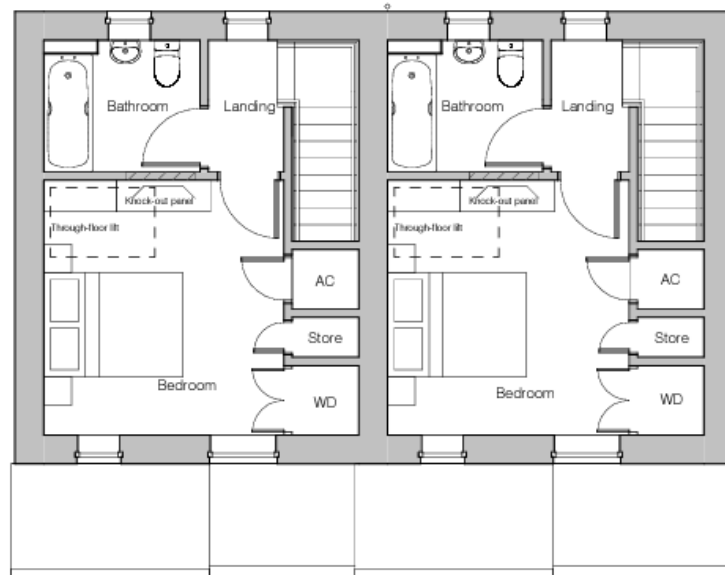
Cymoedd i'r Arfordir  
Valleys to Coast



# The design



Ground Floor Plan  
28.6 sqm



First Floor Plan  
25.8 sqm



Cymoedd i'r Arfordir  
Valleys to Coast

# Delivering innovation for future generations

House type approved by Welsh Government which can easily be replicated at scale across any future development.

Archetype reviewed by Design Commission for Wales as part of a bigger scheme with very positive reviews .

Promotes principles of placemaking.



Cymoedd i'r Arfordir  
Valleys to Coast

# Performance

The Pureblok System meets the highest demands of the international market. The materials we produce are based on the principles of high quality and sustainability. And this is reflected on the final product. Our quality standards is thus guaranteed and for that we have certifications...

COMFORTABLE  
AFFORDABLE  
CERTIFIED  
& FAST



DelkiiPureblok

An Answer to Your Needs

Our Pre-Modular Solutions

Pureblok Global



Cymoedd i'r Arfordir  
Valleys to Coast

# Performance



High Thermal efficiency  
Thermal cond.  $\lambda = 0,0169 \text{ W / mK}$



Excellent Structural Performance  
High Seismic Stability

## Sustainable and Totally Demountable



DelkiiPureblok System

An Answer to Your Needs

Our Pre-Modular Solutions

Pureblok Global



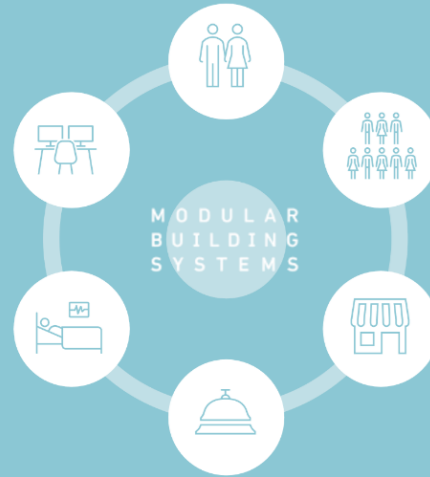
Cymoedd i'r Arfordir  
Valleys to Coast

# Performance

An innovative modular construction system, for all types of residential or social buildings, resorts, schools, health centers, restaurants, offices...

We offer a "Fit your Choice" construction, type, suitable for almost architectural design project, from classic to modern, allowing repeatable units in large volume. We transform ideas into reality, which can be developed according to the highest requirements, and always considering the specific needs of our customers, offering a turnkey project solution.

## VERSATILE



An Answer to Your Needs

Our Pre-Modular Solutions

Pureblok Global



Cymoedd i'r Arfordir  
Valleys to Coast

# The impact

The project removed an eyesore from the area which attracted antisocial behaviour and replaced it with an innovative and attractive scheme which has directly impacted on reducing homelessness in the Bridgend area.

Funded through the Welsh Government's homelessness grant and allocated in partnership with Bridgend County Borough Council through the Rapid Rehousing Protocol to provide warm, comfortable, affordable and attractive homes for people moving on from temporary accommodation in the Bridgend area.



Cymoedd i'r Arfordir  
Valleys to Coast

# Helping build a **Better Bridgend and Wales**

o'r Cymoedd i'r Arfordir  
from Valleys to Coast

