



# Awards

# 2016

## Celebrating

## 10 Years

Headline Sponsors



# Headline Sponsors

Without CEW Award entrants we could not celebrate how great Welsh construction is, but without our sponsors there is no event, no party and no showcasing of industry talent. So, we are enormously grateful for the support of Network Rail, Costain and ABC Electrification in this, the tenth anniversary of the CEW Awards. All of them are tremendous supporters of Wales, its supply chain and the best practice principles advocated by CEW and the wider industry. Thank you for your commitment and for being our headline sponsors of the 2016 CEW Awards.

For all three companies, collaboration is just 'how we like to work' - in partnership with our customers, with our own people, with businesses and suppliers, with our neighbours and the natural environment. Where ever we work, we create real legacies for future generations, in terms of skills, knowledge, aspirations and an improved environment.



**Network Rail** is the owner and operator of Britain's railway network and provides train operating companies with track access. It runs, maintains and develops the infrastructure, including stations, track, signalling and level crossings, as well as plans for future capability. As a 'not for shareholder dividend' company – all profits are re-invested to improve the railway.

Responding to unprecedented demand, Network Rail is undertaking the biggest investment in Wales' railway since Victorian times, including the electrification of the South Wales Mainline.

Electrifying this key railway route will mean faster, greener, quieter and more reliable journeys for tens of thousands of passengers.



**Costain** is one of the leading UK engineering companies, working in the energy, water and transportation sectors. They are justifiably proud of their track record in Wales including Porth Relief Road, Church Village Bypass and Port Talbot Harbour Way.

They are currently delivering Section 2 of the Heads of the Valleys road and the early stages of the M4 Corridor around Newport, M4 Junction 28 and Brynglas Tunnels refurbishment projects. Costain is proud to have received several CEW awards, including the UK Best of the Best Award for Porth Relief Road in 2007.



**ABC Electrification Ltd. (ABC EL)** was formed by Alstom, Babcock and Costain, to work in partnership with Network Rail on the UK rail electrification programme. ABC EL is currently working on the West Coast and London-North West mainlines, Edinburgh to Glasgow and sections of the Great Western Electrification Programme between Swindon and Swansea.

As one of the largest electrification contractors in Europe, we are delivering electrification to more than two thousand miles of the UK's rail system. ABC EL combine design, engineering and delivery expertise across all rail electrification activities and are trusted with the most complex and demanding schemes.

We are pleased to be the headline sponsors for the CEW Awards 2016 and hope you enjoy your evening.



Welcome to the Celtic Manor and the tenth birthday of the CEW Awards.

It is more than just a birthday. The CEW Awards is also a time for everyone in the industry to celebrate how good Welsh construction is and to applaud each other for the great work done each and every year.

For nine of the past ten years we have held the CEW Awards I have been chairman of CEW. In that time the commitment to the best practice – particularly the concept of collaborative working – shown by you, your organisations, employees and supply chains is always remarkable. What's more during this time we have all shared in a great deal of positive change.

Almost all organisations in the Welsh construction supply chain can demonstrate technical excellence. What is different now, and what each of you prove in your award entries, is that your work is distinguished because of a focus on adding value. Ten years ago, despite strong progress by the CE movement and the change agenda driven by Egan and Latham, ideas like whole life costs were just that – ideas. Issues such as zero waste and low carbon, proper training and apprenticeships or establishing sustainable and local supply chains involving SMEs that were talking points or tick boxes at best are now mainstream practice.

CEW and these awards in particular, has served to move these ideas and others such as community benefits not just up the agenda, but to a position where they are critical to how a client, contractor or supplier is perceived and a project delivered. Now, people pay close attention to these issues – perhaps particularly the long term impact of projects on local people.

This work by CEW is often unsung; almost always behind the scenes cajoling, educating, informing and influencing. It could not be done without your support and superb, innovative and often ground breaking evidence provided via the CEW Award entries.

This year is no exception. Once again you have excelled. Your work, your award entries proves that best practice and collaborative working is the only way Wales will achieve its industry objectives and create a world class built environment. Great work has been achieved, but more still needs to be done – which means CEW's work is unfinished. Wales needs the sector level expertise and credibility provided by CEW, its team and its stakeholders. This event makes that abundantly clear.

So, well done to all of you. Thank you for your support for CEW, to me as chairman and best practice.

You are all winners and you are all a credit to your industry and to Wales.

**Richard Wilson**

Chairman, Constructing Excellence in Wales

# Order of Ceremony / Menu

## Introduction

Jason Mohammad

## Starter

*Black Mountain Smokery Salmon with gentleman's relish, beetroot cured salmon tartare, balsamic caviar, lemon gelée and sourdough bread*

## Pre-ordered Vegetarian

*Wild Mushroom Arancini*

## Awards presentations

Integration & Collaborative Working Award  
SME of the Year (category 1-50 & 51-250)  
Sustainability Award  
Health & Safety Award

## Main

*Slow Roasted Sirloin of Beef, thyme roasted carrots, Kohlrabi puree, potato, summer greens and a red wine glaze*

## Pre-ordered Vegetarian

*Sun dried Tomato and Mascapone Raviloli*

## Awards presentations

Value Award  
Innovation Award  
Young Achiever of the Year  
Achiever of the Year  
BIM Project of the Year

## Dessert

*Bara Brith Trifle with honeycomb, spiced Welsh hilltop honey gel and lemon cream  
Tea, coffee & Chocolates*

## Awards presentations

Leadership & People Development Award  
Client of the Year  
Project of the Year Civils  
Project of the Year Buildings

## Close and networking

## Wine

*Sauvignon Blanc Reserva Los Picos, Valle Central, Chile  
Cabernet Sauvignon, Les Foncanelles, I.G.P. Pays d'Oc, France 2014*



Awards  
**2016**  
Celebrating  
10 Years

Shortlist

# Integration & Collaborative Working Award

Judges: Mike Edmonds   Simon Lander   Andrew Wedlake

Award Sponsored by

**HUGH | JAMES**  
Understanding law, understanding you

The judges looked for evidence of commitment to progressive practices such as early contractor involvement, fair payment and integrated teams that has produced measurable improvements and resulted in high customer satisfaction.



## Cloud based Supplier Intelligence and Analytics - ABC Electrification

- ABC Electrification and Network Rail worked together to map complex supply chains within the Wales Route Infrastructure and Electrification projects
- The project team collaborated with major stakeholders and an SME software company to develop a cloud-based technology solution
- The system allows Network Rail and its partners to understand and better manage the supply chain on a complex framework of construction projects

## Cwmbran High School – Torfaen County Borough Council/ Willmott Dixon Construction Ltd

- An existing school was remodelled and refurbished to create a new high school within rigorous time and cost restraints
- The council's design team and education officers established a close collaborative partnership with the contractor and school staff
- Design, costing and construction were carried out concurrently in order to achieve successful completion and meet high stakeholder expectations



## M4 Junction 33 Capacity Improvement – Alun Griffiths (Contractors) Ltd

- The project provides a dedicated lane between the M4 exit slip and the A4232 to ease congestion at a strategically important 'pinch point'
- An integrated team drawn from WG, the regional road agency and the contractors worked with wider stakeholders to minimise disruption
- Collaborative working and a holistic approach to the programming of works helped save £1.5 million in driver delay costs

---

## North Wales Construction Framework

---

- The framework promotes openness, transparency and flexibility, with continuous communication and engagement embedded in working processes
- Key drivers include BIM, community benefits, standardisation and collaboration, with knowledge shared through stakeholder forums
- Close working relationships enabled clients and contractors to establish realistic targets of what social benefits could be delivered



## South and Mid Wales Collaborative Construction Framework (SEWSCAP)

---

- The largest cross-sector collaborative procurement framework in Wales, SEWSCAP is widely regarded as the model for similar frameworks
- Central to success are the shared objectives, processes and tools among clients and contractors, enabling a less adversarial approach
- The framework works to embed best practice and Welsh procurement policy in construction projects across the region, resulting in high client satisfaction



## Welsh National Sailing Academy and Events Centre – Wynne Construction

---

- The iconic new national venue for performance sailing had to be completed within a tight budget while meeting high client and end user expectations
- Early supply chain involvement was fundamental to design integrity, efficient delivery and overall project success
- The design team and supply chain worked through BIM level 2 using Revit software to achieve an integrated design and planning environment





# SME of the Year

Judges: Keith Jones    Andrew Marchant    Jane O'Leary

Award Sponsored by



This award recognises the outstanding achievements of a smaller enterprise, particularly one that has shown imagination and diligence in improving its own performance. The award is divided into two categories: 1-50 and 51-250 employees.



## Cambria Consulting Ltd (SME Category 1-50)

- A small but dynamic engineering consultancy set up in 2011, Cambria was quick to embrace new construction technologies and BIM level 2
- The organisation's flat hierarchy emphasises the value of everyone's contribution to a project
- The high priority placed on training and professional development is symptomatic of the company's strong focus on staff

## Caulmert Ltd (SME Category 1-50)

- An employee-owned engineering, environmental and planning consultancy, Caulmert works hard to provide employment opportunities for local people
- It is committed to facilitating the personal and professional development of its stakeholder employees through structured support and training
- Caulmert actively supports collaboration, best practice and knowledge sharing through the CEW best practice clubs



## CD Gray & Associates Ltd (SME Category 1-50)

- Over 25 years, this engineering consultancy has developed a strong customer-focused culture with the emphasis on solid client relationships
- A willingness to develop, empower and support staff has ensured widespread commitment to new and innovative working processes
- Nominating company Walters UK noted that its ten-year working relationship with the consultancy has been built up on trust, reliability and performance







### Andrew Scott Ltd (SME Category 51-250)

- Established in 1870, this long-standing construction company remains competitive through its focus on core values such as customer satisfaction
- Its exceptional safety culture has resulted in an accident frequency rate of 0.12, which is below the industry standard
- The company has invested heavily in new technical hardware and software, particularly to develop its in-house BIM capabilities

### Boyes Rees Architects Ltd (SME Category 51-250)

- An architectural practice offering a total design service, from urban planning to project management, 3D visualisations and BIM Management
- Specialising in healthcare projects has prompted the practice to broaden its expertise in areas such as healthcare planning and business case writing
- The practice is committed to continuous improvement through environmental awareness, innovation and design excellence



### Contract Services (South Wales) Ltd (SME Category 51-250)

- The building maintenance contractor has abandoned traditional thinking in favour of a 'learning organisation' culture
- The company actively promotes apprenticeships, with full-time apprentices currently accounting for 15% of its workforce
- A comprehensive strategic review at the end of 2014 helped to pinpoint strengths and weaknesses and identify opportunities to improve delivery

### Morganstone Ltd (SME Category 51-250)

- A well-established residential housing contractor that is diversifying into other sectors as part of its long-term strategy for growth
- Consistent use of Welsh Government Community Benefits Toolkits on its projects mean that for every £1 spent, £2 is contributed to the economy
- The company's commitment to investing in and developing its workforce is backed by many diverse training schemes



# Sustainability Award

Judges: John Edwards

Colin King

Rob Panell

Award Sponsored by



The judges looked for a project or organisation with a committed and creative approach to sustainability that has produced real benefits for the environment, stakeholders and the local community.



## B&Q Eco Learning Store – Powell Dobson Architects/BAM

- B&Q's new Eco Learning Store was designed for lower running costs and significantly better environmental performance compared to other stores
- It is the first in the UK to feature a Tata Transpired Solar Collector System, harvesting heat from the sun to warm the store's interior
- The low cost TSC technology has a payback time of under 10 years, comparing favourably with other sustainable technologies

## Burry Port Community Primary School – WRW Construction Ltd

- The new community school includes two buildings built on Passivhaus principles, designed to reduce utility bills by up to 90%
- Use of the innovative chemical-free Brettstapel process enabled the project to exploit Wales's large stock of fast-growing, low-grade softwood
- The project's ambitious environmental strategy and strong social agenda have created a healthy and comfortable space that promotes user wellbeing



## Project Riverside – Alun Griffiths (Contractors) Ltd

- This major regeneration project aims to bring tangible social, economic and environmental benefits to the communities of Merthyr Vale and Aberfan
- Works include flood protection, new bridges connecting the communities, a household waste and recycling centre, and recovery of brownfield land for sustainable housing
- BIM collaborative working techniques were used to provide 3D visualisations and coordinate the multidisciplinary design

## Ysgol Bro Llifon – Cyngor Gwynedd

- The project combines three village schools into one flagship building, designed to be a model of sustainable educational provision
- The project reused an original stone school building, replacing the 1960s timber frame extension with a new thermally efficient structure
- Solar panels and other energy efficient features in the new building have helped reduce the electricity use of the original three schools by 50.4%



# Health & Safety Award

Judges: Mark Bodger Chris Gray Stella Saunders

Award Sponsored by



The judges looked for a project, organisation or initiative demonstrating real leadership and innovation in its approach to health and safety, resulting in practices far exceeding industry norms.



## Kier Construction Western & Wales

- Kier uses the group's 'Positive Safety Leadership Programme' to ensure a culture of safety across the organisation, subcontractors and other partners
- Kier's willingness to share lessons learned is beneficial to the company, its supply chain and the wider construction workforce
- The company's safety strategy has resulted in a zero accident record since September 2010

## Noah's Ark Children's Hospital for Wales Phase 2 – Interserve Construction

- The collaborative ethos infusing the project was a major factor in avoiding accidents and incidents on a congested live site
- Unique solutions were developed for specific problems, such as the traffic management and aspergillus policies now adopted as benchmarks
- More than 600,000 man hours were worked with no lost time events



## Sobell Development – Laing O'Rourke Construction Ltd

- The strong ethos of inclusiveness developed on the project allowed everyone to take personal and collective responsibility for health and safety
- The emphasis on prefabrication to minimise work on site helped to create a safer, more controlled environment, resulting in zero reportable incidents
- The project's innovative solutions to design challenges will build safety into the building for years to come





# Value Award

Judges: Mike Edmonds   Simon Lander   Geoff Ogden

Award Sponsored by



The judges evaluated the overall impact of the nominated projects, balancing the whole life cost of the asset against its intrinsic worth to its users, the built environment and the wider community.



## Bryn Ivor Lodge – Castleoak

- This new build care home is designed to provide exceptional care facilities for older people in the local community for up to 40 years
- Use of BIM identified conflicts within the design and resolved them at an early stage, reducing unnecessary waste and eliminating defects
- The team liaised with Recipro Wales to make surplus materials available to charitable organisations, community groups, schools and social enterprises at a heavily discount rate

## Burry Port Community Primary School – WRW Construction Ltd

- Good community engagement from the start ensured an innovative design that is sustainable, conducive to learning and a source of local pride
- The project acted as a showcase for the productive use of Wales's large stock of sustainable softwood
- The lessons learnt from use of BIM, the Passivhaus standard and Brettstapel technology will benefit future projects



---

### Cyfarthfa Retail Park Redevelopment – Powell Dobson Architects/BAM

- The project aimed to create a B&Q store with lower operating costs and improved environmental performance compared to other stores
- A team drawn from industry and academia collaborated on the development of new technologies to improve sustainability and energy efficiency
- The project aligned with B&Q's sustainability objectives and resulted in technologies and processes that could be replicated elsewhere



### Llwyncrwn Primary School – Morgan Sindall

- Use of a proven model school design guaranteed a high-value but affordable local asset
- Early end user engagement ensured the specific needs of the school's future users were integrated into the design
- The model was developed using BIM, enabling the design to be easily updated and customised for future projects

### The Agilis School Model – ISG

- ISG worked with architects, engineers and consultants to create a standard model for primary schools in line with 21st Century Schools objectives
- Use of the model saves time and reduces costs, while early stakeholder engagement ensures the design is tailored to specific needs
- Knowledge acquired from ISG's school projects is shared with local authorities, head teachers and other stakeholders at Agilis open days



# Innovation Award

Judges: Phil Lumley    Ioan Prydderch    Pierre Wassenaar

Award Sponsored by



This award singles out the organisation or project that has taken the most inventive approach to overcoming project-specific challenges, developing solutions with the potential to improve the organisation's performance and benefit the wider industry.

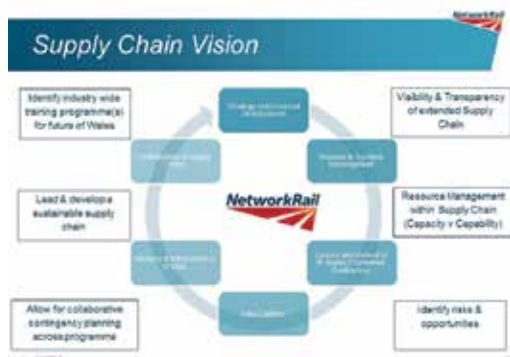


## Adult Mental Health Unit, Llandough Hospital – Laing O'Rourke Construction Ltd

- A new mental health facility was built in a live hospital environment, with patient and staff safety balanced against a pleasant therapeutic ambience
- Use of BIM ensured speed and efficiency in the design and construction process, helping the project to complete a month early
- The committed approach to safety included the development of special features such as anti-ligature windows and patient observation systems

## Burry Port Community Primary School – WRW Construction Ltd

- An infant and junior school have been amalgamated to create a community school that is an exemplar for Welsh schools
- The new buildings are designed on Passivhaus principles, making this the first Passivhaus primary school in Wales
- The project is a showcase for the use of Welsh timber, assembled using the innovative, chemical-free Brettstapel technique



## Cloud Based Supplier Intelligence and Analytics – ABC Electrification

- ABC and Network Rail worked together to map the complex supply chain involved in major electrification works in Wales
- The solution uses the latest cloud-based technology to deliver usable, real-time data about suppliers to organisations involved in the project
- ICT is imaginatively used to overcome the challenge of multi-party communication and utilisation of real-time data



## coBuilder

- coBuilder allows construction product manufacturers to structure their data and make it available in multiple BIM formats and languages
- The company's productXchange tool enables contractors to collect as-built data and output it in COBie and other widely used data formats
- Innovative use of ICT promotes interoperability and wider use of BIM



## Sobell Development – Laing O'Rourke Construction Ltd

- A new 'super school' was built as part of the Sobell Development in Aberdare under the SEWSCAP framework
- A standardised component-led approach led to effective use of offsite manufacturing techniques
- Full use of BIM ensured an efficient design process and accelerated production of components

## The Agilis School Model – ISG

- ISG worked with architectural and engineering consultancies to produce a standard primary school model suitable for South Wales
- The model is built around lean building processes and other solutions tried and tested on earlier projects
- The focus on lean construction has been a major factor in ensuring the model is an improvement on the current south west of England school model



Award Sponsored by



# Young Achiever of the Year

Judges: Andrew Gibson    Paul Lavelle    Daniel Rossiter

This award highlights a young construction industry professional who has made an outstanding contribution in the G4C (Generation for Change) priority areas of people, sustainability and asset outcomes.



**Adam De Benedictis**  
City of Cardiff Council



**Sara Hedd Ifan**  
Powell Dobson Architects



**Liam J McGoldrick**  
Thames Valley Construction  
& Civil Engineering Ltd

Award Sponsored by



# Achiever of the Year

Judges: Mike Edmonds    Rhodri-Gwynn Jones

This award highlights an outstanding individual who has helped move the industry forward by championing Rethinking Construction principles and inspiring others to change their attitudes and behaviour.



**Andrew Beadle**  
Powell Dobson Architects



**Steve James**  
Opus International Consultants (UK) Ltd



**Anthony Rees**  
Cyfle Building Skills Ltd

# BIM Project of the Year

Judges: Daniel Rossiter    Andrew Thomas    Nick Tune

Award Sponsored by



This award highlights the company or project that has made the best use of Building Information Modelling and associated digital processes to improve the design, delivery and operation of built assets.



## A465 Dualling Section 3 – Carillion Civil Engineering

- This key infrastructure project used BIM to improve information management and promote a collaborative culture among all participants
- Integrating time, cost, temporary works and earthwork solutions into Syncro planning software resulted in 'right first time' delivery
- An effective soft landings approach provided asset management and maintenance teams with the information they needed in the right format

## Adult Mental Health Unit, Llandough Hospital – Laing O'Rourke Construction Ltd

- The unit was developed to BIM level 2 with the main contractor, consultants and major subcontractors all benefiting from a single information platform
- More than 30 models representing different aspects of the construction process were combined in a single federated model
- Live walkthroughs and 3D views generated by BIM geometry helped the client and key stakeholders to engage with the project



## Holywell Learning Campus – Galliford Try

- The Holywell campus is the first BIM level 2 project to be commissioned by Flintshire under the 21st Century Schools programme
- Setting new standards in the use of BIM, the work undertaken by the team is shared with neighboring local authorities starting on their BIM journey
- The project demonstrated how the benefits of using BIM extend far beyond the scope of the works



# Leadership & People Development Award

Award Sponsored by

ARUP

Judges: David Benson Rhodri-Gwynn Jones Tony Norris

The winning organisation had to show how targeted leadership development and training initiatives have improved the performance and wellbeing of its workforce and won respect from clients, suppliers and the local community.

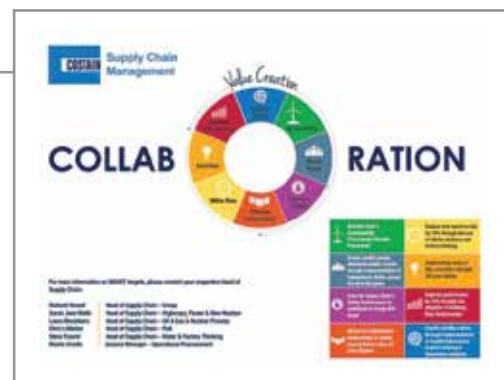


## A465 Heads of the Valleys Section 2 – Costain Ltd

- Currently the only major infrastructure project in Wales with CITB National Skills Academy status, promoting apprenticeships and skills development
- The project aims to support sustainable communities by leaving a legacy of highly skilled workers for future schemes
- The scheme's design and execution demonstrates excellent vision and a good understanding of Wales' needs

## SME Supply Chain Academy – Costain Ltd

- The SME Academy addresses the skills gap within the Tier 2 and Tier 3 supply chain in Wales, helping to build a competent base of local businesses
- Costain staff and partners and local Welsh businesses deliver a focused training programme, free of charge to SME participants
- The academy is distinguished by its leadership development initiatives and embedded health and safety culture



## Engineers for Overseas Development Ltd (EFOD)

- A group of 20 young engineers and ecologists from Cardiff-based companies designed a sustainable water supply for a community in rural Uganda
- Working in their own time, they led the construction phase using local labour and suppliers and locally sourced materials
- The initiative is an impressive achievement, going from zero to a well-developed product that is part of local culture rather than being 'bolted on'



---

### Lendlease North Wales Prison Project – Lendlease

- Lendlease has put training and workforce development at the heart of its project to build a new 'super prison' in Wrexham
- A Learning and Ambition Academy has been set up to train and develop employees on site and people from the local community
- Over 30 training programmes, including targeted leadership development, have been delivered to over 750 employees and members of the community



### Transforming Spaces: Design Factor – Pinkspiration

- Pinkspiration is providing community benefits, skills and training for young people as part of the A465 road scheme
- The project is a showcase for the company's efforts to promote structured careers and encourage diversity in the construction industry
- The initiative has produced many exemplary outcomes and gifted a strategic legacy to the area

### Willmott Dixon Leadership and People Development Strategy 2015

- The strategy focuses on transforming staff perceptions of the value of community work and engaging with the long-term unemployed
- It is aligned with Construction 2025 sustainability targets, including the need to reduce the skills gap
- An effective 'business plan' approach has helped change awareness of social value and how it should be evaluated on construction projects





# Client of the Year

Judges: David Benson Rhodri-Gwynn Jones Tony Norris

The judges looked for a construction client that has shown clear, consistent leadership and commitment to core Constructing Excellence principles and has embraced the goals enshrined within Construction 2025.



## Cardiff & Vale University Health Board

- Noah's Ark Children's Hospital is the first dedicated children's hospital for Wales, purpose built to provide state-of-the-art clinical facilities
- The client led a fully collaborative process with full stakeholder engagement to ensure the end result was the right fit for the task
- Excellent vision, leadership and clear management underpinned the contract and the construction process

## Flintshire County Council

- Flintshire's strategic direction and active leadership underpinned a genuinely collaborative ethos among everyone involved in the new build project
- The council's early commitment to BIM Level 2 helped ensure that the potential of BIM was fully exploited
- Best practice and lessons learnt have been shared with regional local authorities and the wider industry, feeding into the CLAW BIM toolkit



## South and Mid Wales Collaborative Construction Framework (SEWSCAP)

- SEWSCAP is the largest cross-sector collaborative procurement framework in Wales, having delivered over 45 projects with a total tendered value of £500m
- Framework projects are based on shared objectives, processes and tools to facilitate a common, less-adversarial approach
- The Scape framework benefits contractors and suppliers in many ways, including speedy project starts and prompt payments

## South Wales Police

- South Wales Police is using the Scape framework to deliver various new build and refurbishment projects across its estate
- The main contractor commends the force for its transparency and approachability in working with often sensitive and confidential material
- Judges commented on the benefits of using the Scape framework, including speedy project starts and prompt payments to the supply chain







# Project of the Year – Civils

Judges: Vince Hanly Phil Jones Andy Sutton

The judges looked for an outstanding project that has delighted the client and been a source of pride for all parties involved, demonstrating the highest levels of technical achievement, innovation, best practice and team working.



## A465 Dualling Section 3 – Carillion Civil Engineering

- This key infrastructure project has delivered a real and lasting legacy for Blaenau Gwent and the wider Welsh economy
- Strong client leadership, early contractor involvement and collaborative working helped deliver the works on time and under budget
- The project was an impressive demonstration of best practice in most aspects and its lessons have been widely disseminated



## Pen y Cymoedd Wind Farm – Jones Brothers & Balfour Beatty Joint Venture

- The largest onshore wind farm in England and Wales, 76 turbines will generate 228MW of power to the grid – enough for 140,000 homes
- The project is contributing to the regeneration of the local community and will leave a legacy of skilled workers
- Special processes were developed to address the environmental and safety challenges of working in a remote, harsh environment



## Pont Briwet – Cyngor Gwynedd

- The project replaced a deteriorating historic timber bridge with a new rail and road bridge designed to enhance local transport connections
- The new bridge was designed to be affordable and sustainable, with various innovative features to reduce whole life maintenance costs
- The complicated and sensitive works were successfully delivered in a demanding environment

## Rhiwbina Flood Defence Scheme – Raymond Brown Construction Ltd

- The scheme required a robust but sensitive solution that would minimise the environmental impact on the watercourse and surrounding area
- Active community engagement at every stage ensured the finished scheme was fit for purpose and aesthetically sensitive
- The delicate and intricate intervention was executed with care for the environment and local sensibilities



# Project of the Year – Buildings

Judges: Vince Hanly Phil Jones Andy Sutton

Award Sponsored by



The judges looked for an outstanding project that has delighted the client and been a source of pride for all parties involved, demonstrating the highest levels of technical achievement, innovation, best practice and team working.



## Adult Mental Health Unit, Llandough Hospital – Laing O'Rourke Construction Ltd

- A new mental health facility was built in a live hospital environment with special attention paid to minimising disruption to patients
- Use of BIM, a collaborative ethos and early contractor involvement all contributed to driving the project to early completion
- The project included impressive sustainability features and demonstrated a strong commitment to shared learning

## Burry Port Community Primary School – WRW Construction Ltd

- An infant and junior school have been amalgamated to create a community school that is an exemplar for Welsh schools
- The project is the first Passivhaus primary school in Wales and a showcase for the productive use of sustainable Welsh timber
- Good community engagement from the start ensured an innovative design that is sustainable, conducive to learning and a source of local pride



## Cwmgelli Lodge – Morganstone Ltd

- This new facility is designed to provide specialist services and accommodation for younger people with dementia or cognitive impairment
- Regular design team meetings and specialist workshops ensured a coordinated approach to design development and construction packages
- The response from actual and prospective residents and their families has been notably positive

---

## Loftus Garden Village – Pobl Group

- The project transformed a derelict piece of land in a challenging area into a model housing development
- A far-reaching community engagement plan provided employment and work experience opportunities and ensured local people were kept informed
- The scheme's social housing provisions has set a good example to volume housebuilders



## Noah's Ark Children's Hospital for Wales – Interserve Construction

- The project is the first dedicated children's hospital to be built in Wales, committed to providing clinical excellence in a child-friendly setting
- The design team engaged with the client, stakeholders and end user groups from the start to ensure the building was the right fit for its young patients
- A dedicated and committed team delivered the high-quality project on time and budget

---

## Sobell Development – Laing O'Rourke Construction Ltd

- A new 'super school' was built as part of the Sobell Development in Aberdare under the SEWSCAP framework
- Modern methods such as standardisation, prefabrication and offsite manufacturing helped to reduce costs and streamline delivery
- The innovative engineering-led solution was made possible by close collaboration between the design team, client and key stakeholders



# Award Judges

Without the support and commitment of our judges, we would not be able to run the awards every year. We would like to express our sincere thanks to each of them, they are the unsung heroes for our awards programme.

**David Benson**

Director of Estates & Facilities, Cardiff Metropolitan University

**Mark Bodger**

Director of Strategic Partnerships, CITB Wales

**Mike Edmonds**

Consultant, Altmore Partnership Ltd

**John Edwards**

Director, Edwards Hart Ltd

**Andrew Gibson**

Director, Cushman & Wakefield

**Chris Gray**

Managing Director, C D Gray Associates

**Vince Hanly**

Director, VH Procurement Consulting Ltd

**Keith Jones**

Director, Institution of Civil Engineers Wales Cymru

**Professor Phil Jones**

Chair of Architectural Science, Welsh School of Architecture, Cardiff University

**Rhodri-Gwynn Jones**

Recently retired Director CECA Wales Ltd

**Colin King**

Associate Director, BRE Wales and SW

**Simon Lander**

Partner, ChandlerKBS

**Paul Lavelle**

Associate Director, Faithful + Gould

**Phil Lumley**

Director, KPL Associates Ltd

**Andrew Marchant**

National Executive Officer, SEC Group Wales/Cymru.

**Tony Norris**

Partner, Head of Infrastructure & Construction, Geldards LLP

**Jane O'Leary**

Operational Manager Property Vale of Glamorgan Council

**Geoff Ogden**

Director Highways & Transportation, Atkins

**Rob Pannell**

Managing Director, Zero Carbon Hub

**Ioan Prydderch**

Partner, Property and Construction Division, Hugh James

**Daniel Rossiter**

BIM Consulting/Training Manager, BRE Wales and SW

**Stella Saunders**

Construction Management, The City of Cardiff Council

**Andy Sutton**

Associate Director, BRE Wales and SW

**Professor Andrew Thomas**

Director, Diligentia Global Limited

**Nick Tune**

CEO, coBuilder UK

**Pierre Wassenaar**

Divisional Director, Stride Treglown Architects

**Andrew Wedlake**

Construction Director, Contract Services (South Wales) Ltd



# Sponsors

# ARUP

Arup was founded in London by Ove Arup in 1946 with an initial focus on structural engineering. Now with 14 offices across Great Britain it has since grown into a truly multidisciplinary organisation. Arup has worked across Wales since 1970 and is now the most substantial and diverse consultant in the Principality. Notable projects in the built environment include the design of the Wales Debating Chamber and substantial contributions to the Millennium Centre and Stadium. In the fields of health and education the exemplary projects of Swansea University and the Design 4 Life program. Arup brings together broad-minded individuals from a wide range of disciplines and encourages them to look beyond the constraints of their own specialisms. This unconventional approach to design springs in part from Arup's ownership structure. We are one of very few truly independent major design consultants with the firm owned in trust on behalf of its staff. The result is an independence of spirit that is reflected in the firm's work, and in its dedicated pursuit of technical excellence.



The Welsh best practice clubs are vibrant clubs providing a stimulus for the sharing of ideas and best practice across each region as well as building important links with each other and industry groups. The Clubs have an important role in reaching out not just to the industry itself, but to the communities affected by the developments. They organise events to share best practice amongst members, to educate local people and play a central role in creating a sustainable future for the industry in Wales.

# bre

BRE is an independent research-based consultancy, testing and training organisation, offering expertise in every aspect of the built environment. We help clients create better, safer and more sustainable products, buildings, communities and businesses. Its office in Wales specialises in retrofit, defect analysis, thermal bridging and post occupancy evaluation, with experts in each of those fields providing independent expert advice to our clients. BRE is wholly owned by the BRE Trust, with profits used to progress the state of knowledge in the construction industry and drive forward cutting edge research and the dissemination of information.



The Chartered Institute of Building is at the heart of a management career in construction.

We are the world's largest and most influential professional body for construction management and leadership. We have a Royal Charter to promote the science and practice of building and construction for the benefit of society, and we've been doing that since 1834. Our members work worldwide in the development, conservation and improvement of the built environment.

We accredit university degrees, educational courses and training. Our professional and vocational qualifications are a mark of the highest levels of competence and professionalism, providing assurance to clients and other professionals procuring built assets.

CIOB Wales works closely with other professional bodies/federations in Wales to ensure we provide fit for purpose CPD for our growing membership.



CITB is the Industrial Training Board (ITB) for the construction industry in Great Britain (Scotland, England and Wales). CITB is working to ensure that construction employers have the right skills, in the right place, at the right time by investing funds and providing a wide range of industry-led skills and training solutions.

CITB is also a partner in ConstructionSkills, the Sector Skills Council (SSC) for the UK construction industry, and is raising employer engagement in training, providing labour market insights on future skills needs and developing standards and qualifications for the sector. For more details on CITB's work visit: [www.citb.co.uk](http://www.citb.co.uk)



The Consortium of Local Authorities in Wales deals with the professional and technical aspects of property management. It acts as a forum for local authorities to discuss, rationalise and find economic solutions to issues arising out of the design, construction, use and management of buildings and makes recommendations for best practice.



Andrew and his colleagues continue to support the Industry in winning ways and innovative excellence in both supply organisations and Clients.

Our customers have had an outstanding year of success and excellence with a continuing focus on delivering the challenges of BIM and GSL, choosing the right partners, and an increasing focus on the increasing implications of the Social Value Act on our sector.

Diligentia strategically support Partners through Non Executive Roles as well as wider Professional Services as well as Government and Policy advice.



G4C Wales is part of the Constructing Excellence movement that particularly champions the contributions of young professionals in the industry, but that also embraces all new comers to the industry and recent graduates who have an interest in the Welsh built environment and developing their career.



Hugh James is a long-established Top 100 firm of around 600 staff, including 49 partners, and offer our clients – who range from owner-managed businesses and private individuals to multinational corporations, financial institutions, public bodies and not-for-profit organisations – the range, strength and depth of expertise they need.



Kier Construction Regional Office in Cardiff offers a comprehensive construction service throughout Wales. Following recent success on the South East Wales and South West Wales Regional Contractors Frameworks, we are delighted to be working on exciting new schemes including the new Aberdare Campus at Coleg Y Cymoedd and the proposed new SA1 Innovation Quarter for University of Wales Trinity St Davids. We continue to deliver a blend of work in both public and private sectors across all values including minor works programmes delivered via the SCAPE Framework. We have recently seen the successful completion of the new International Arena Wales home of the Cardiff Devils, located within Cardiff's International Sports Village. Other significant flagship projects continue on site such as St Fagan's Museum, in Cardiff City Centre we are currently redeveloping Dominions House to a new Indigo hotel and are working with a number of key clients to bring some fantastic new schemes to the Private Market.



SEWSCAP is a South East Wales Schools and Public Building Contractors collaborative Framework hosted by Rhondda Cynon Taf County Borough Council acting on behalf of a number of the ten South East Wales authorities. The framework places Community Benefits at the very heart of all their contracts. Over 50 schools have already been let or built value at over £250m.

The framework has been divided into lots, to achieve a range of contractor sizes and abilities in keeping with the anticipated range of projects and over 450 Welsh Small to medium enterprises (SME's) have been utilised in the supply chains of the main contractors some of whom are Welsh SME's in their own right. Typically contractors are spending over 80% of their spend in the Welsh economy as part of the school build project and offering opportunities for apprenticeships, trainees and general employment as part of their contracts.



---

# Supported Charities



In 2016 Kids Cancer Charity (formerly Christian Lewis Trust) will commemorate 27 years of caring and supporting families affected by cancer. Since 1989, the charity has helped many thousands of families and gained UK-wide recognition for its work and activities. Our services include: Compassionate Care Respite Breaks UK; Play Therapy; Bereavement Counselling; Bereavement Support; Befriending; The American and French "Dream Experience" and Travel Insurance advice. "We believe that quality of life for children affected by cancer is a right. To work with them and their families is a privilege"

Should you require further information please contact:

**Eira Gwynn**

**Kids Cancer Charity**

Christian Lewis Trust

Perch Buildings, 9 Mount Stuart Square

Cardiff, CF10 5EE

Tel: 029 20489833



The "Conwy Kids Matter" charity is made up of volunteers whose day jobs are Family Intervention Workers based within Conwy's Children and Family Services (Social Services). Conwy Kids Matter is a charity that aims to give life enhancing experiences to children from disadvantaged backgrounds that receive support from Children and Family Services. The group works in partnership with social services teams and aims to enhance and increase the services already provided to families in need. Our aim is to provide positive experiences and opportunities that our children might not otherwise have, such as outings to the zoo, opportunities to experience a Pantomime, swimming lessons, sailing lessons, dance classes, toys and food hampers and vouchers at Christmas time etc.

Should you require further information please contact:

**Janet Lee/Vickie Baird/Ann Rees**

**Conwy Kids Matter**

Civic Centre Annexe, Abergale Road

Colwyn Bay, Conwy, LL29 8AR

Tel: 01492 575178/01492 575386

**ADEILADU  
ARBENIGRWYDD**  
YNG NGHYMRU



**CONSTRUCTING  
EXCELLENCE**  
IN WALES

Constructing Excellence in Wales  
2nd Floor East, Longcross Court  
47 Newport Road, Cardiff  
CF24 0AD

T: 029 2049 3322  
F: 029 2049 3233  
E: [info@cewales.org.uk](mailto:info@cewales.org.uk)  
[www.cewales.org.uk](http://www.cewales.org.uk)



@CEWales



Constructing Excellence in Wales



CEinWales



Noddir gan  
**Lywodraeth Cymru**  
Sponsored by  
**Welsh Government**

Printed on Cocoon offset 100% recycled

## Headline Sponsors



## Sponsors

