

Developing a Strategy for the Industry

Thursday 5th October 2017

St Georges Hotel, Llandudno



Welcome

Milica Kitson
Chief Executive

Constructing Excellence in Wales



A G E N D A

09.00	Welcome and Introductions	Milica Kitson
09.10	Welsh Context	Emma Thomas
09.25	Session 1	
09.35	Session 2	
10.05	Feedback	
10.20	Opportunities	Emma Thomas
10.35	Session 3	
10.50	Feedback	
11.00	Next steps and Close	



Welsh Context

Emma Thomas

Director



Legislation & Regulation

- Environment Act
 - Separate collections
- WFG Act: Prosperous Wales

An innovative, productive and low carbon society which recognises the limits of the global environment and therefore uses resources efficiently and proportionately (including acting on climate change); and which develops a skilled and well-educated population in an economy which generates wealth and provides employment opportunities, allowing people to take advantage of the wealth generated through securing decent work.

- Planning and Building Regulations



Policy

- Programme for Government

- Prosperous & secure

- “better jobs, closer to home. We want work and secure housing for all, supported by sustainable growth in our businesses”*

- Healthy & active

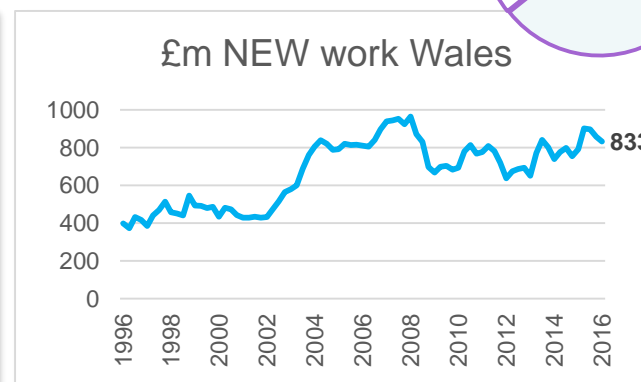
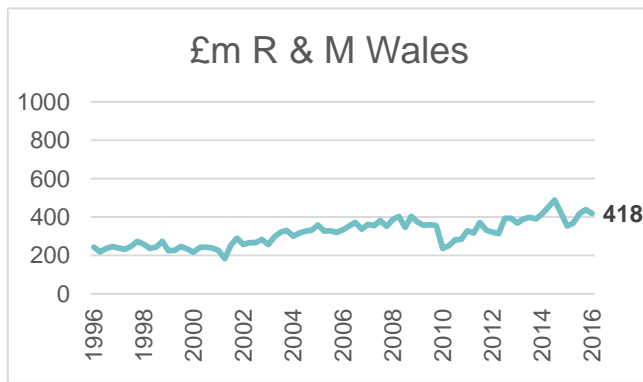
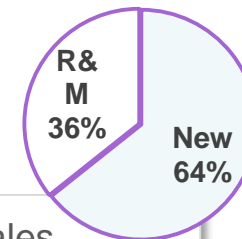
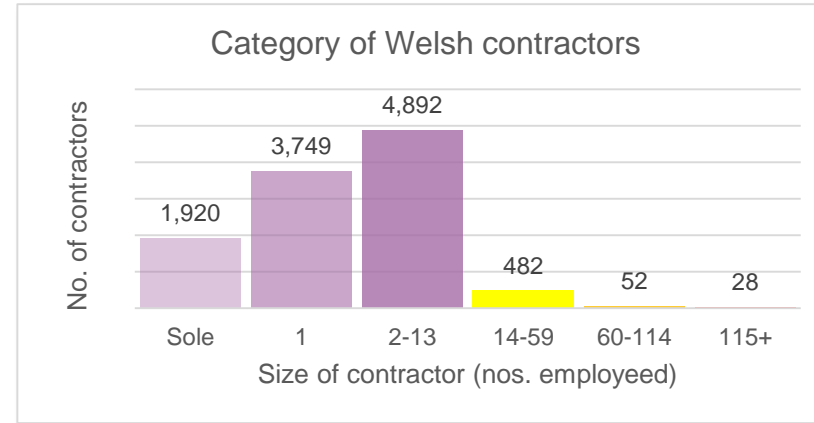
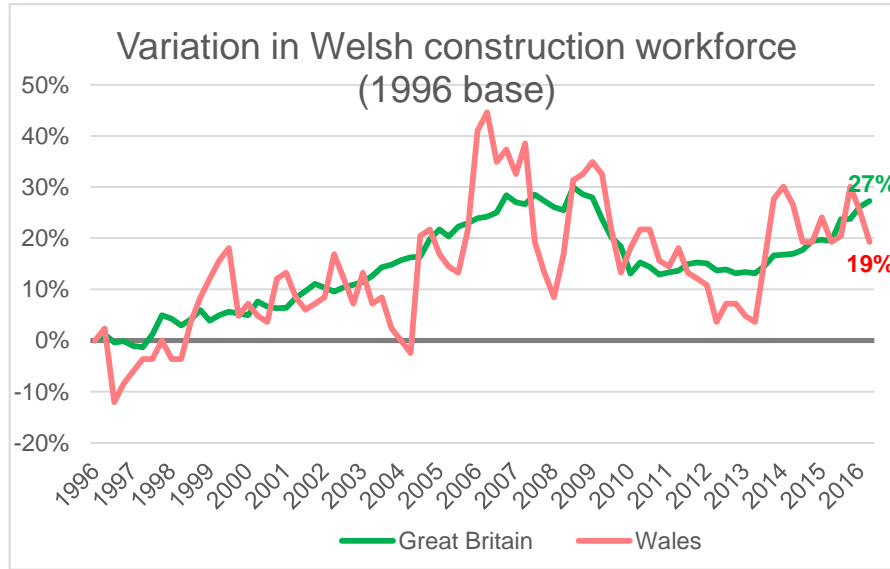
- Ambitious & Learning

- United & Connected

- Towards Zero Waste refresh

- Planning Policy Wales – Facilitating good development

Built Environment Sector: Wales



	R&M	New
Civil engineering	17%	25%
Construction of buildings	23%	31%
Electrical	12%	11%
Plumbing; Heating; A/C	10%	6%
Plastering	1%	1%
Joinery	6%	4%
Completion Finish	5%	3%
Roofing	3%	2%
Scaffolding	3%	2%
Floor / Wall	2%	2%
Other Specialists	19%	14%



80% of 2050 building stock is already here

Source: BRE



Resources

- 80% of all materials produced used in the built environment
- Largest producer of controlled waste
- Critical Raw Materials
 - Aggregates
 - Steel
 - Aluminium
 - Timber



Session 1

How important is it for Wales to have its own Strategy for this industry?



Session 2

What are the key issues affecting this industry in Wales?



Opportunities

Emma Thomas

Director



Growth areas



Growth areas

- Timber
- Modern methods of construction
- Existing stock
- BIM



EU Exit



EU Exit

- Internal markets
- Definition of waste
- Raising standards



Alternative investment

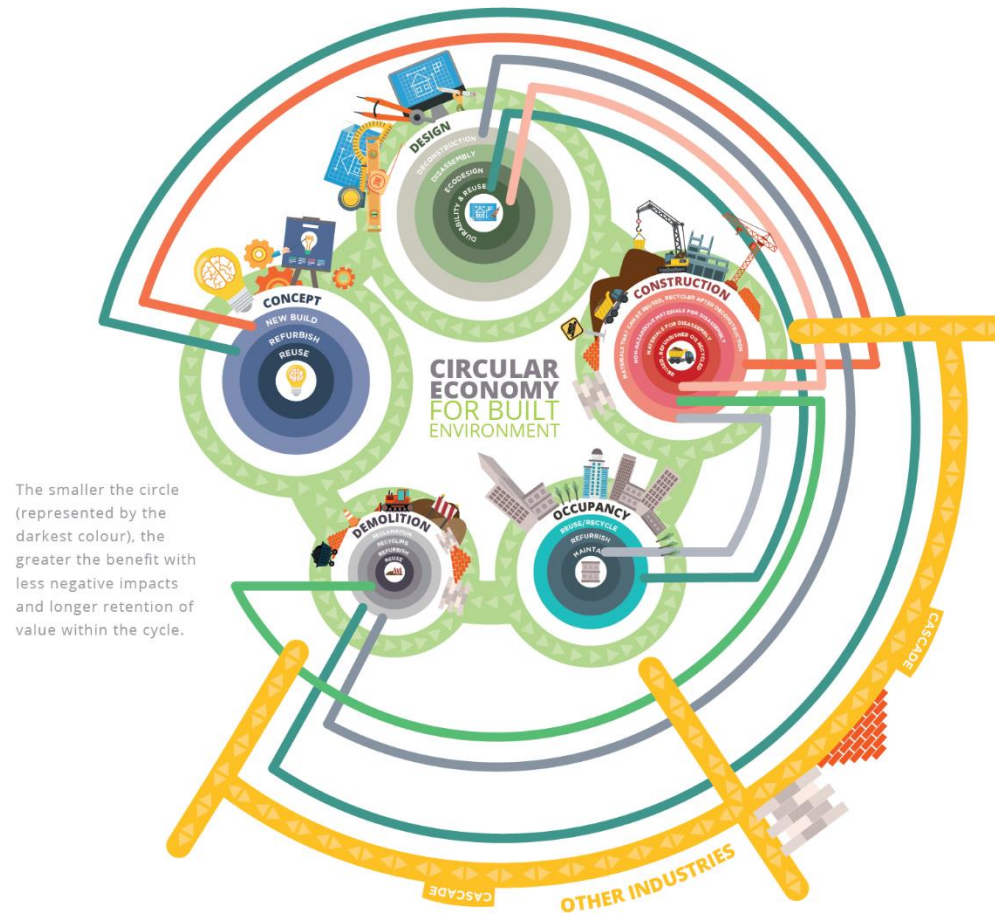


Alternative investment

- Community funding of public assets
- Co-investment with public monies
- Bonds



Circular Economy



Looking within: Circular Economy

Adopting circular economy practices in construction & built environment sector Wales would lead to a level of benefit of the order of **£1bn annually**



Government intervention



Government intervention

- Project levy
- Client tax model



Workshop 2: Wants/Needs



Session 4

What are the priorities?



Session 4

If you were First Minister...



Next steps

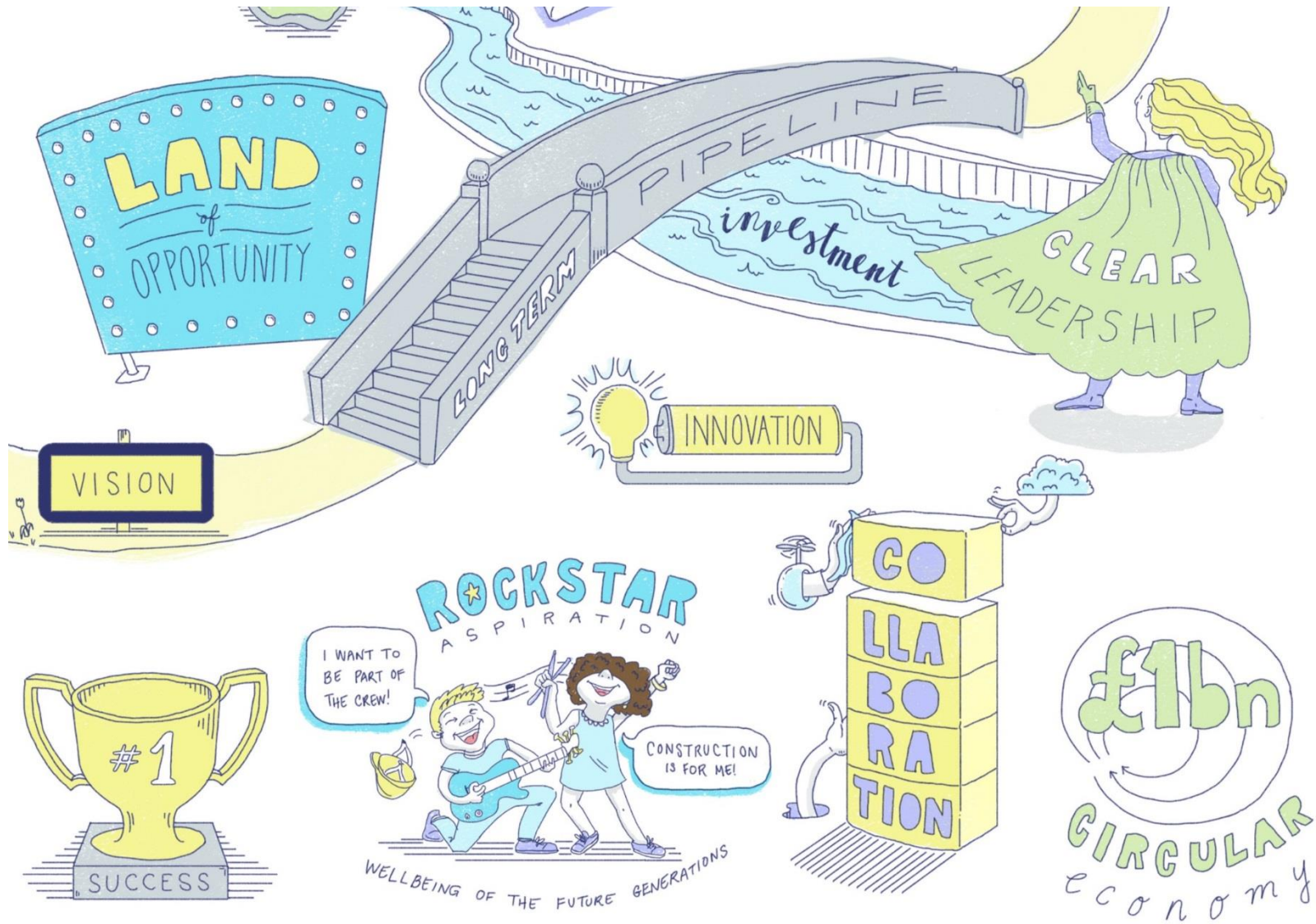


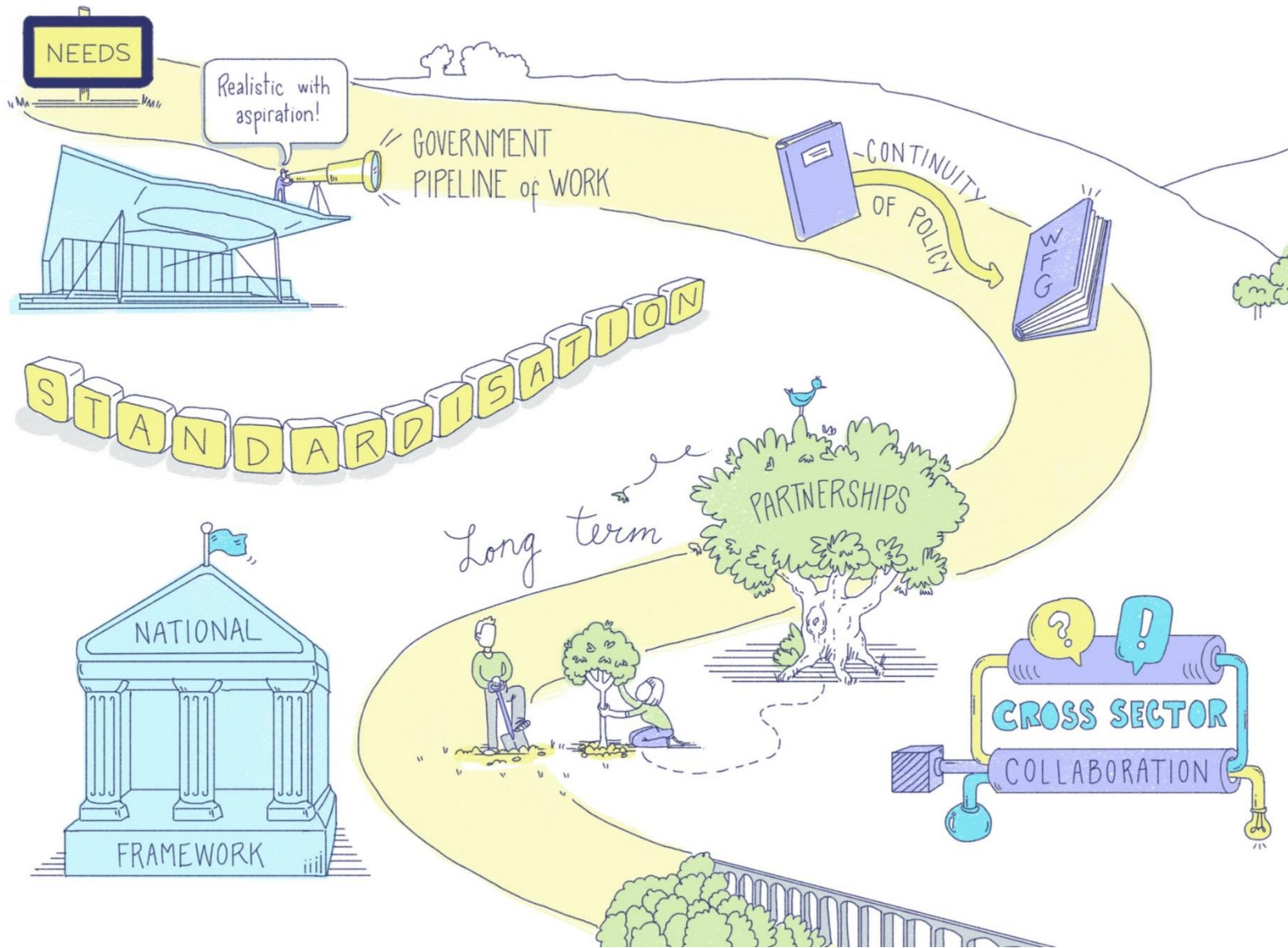
CONSTRUCTION STRATEGY FOR WALES



Illustration by Laura Sorvala







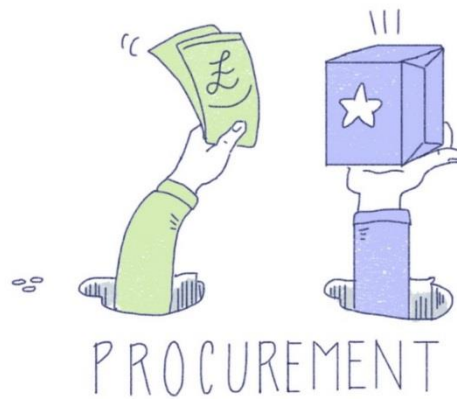
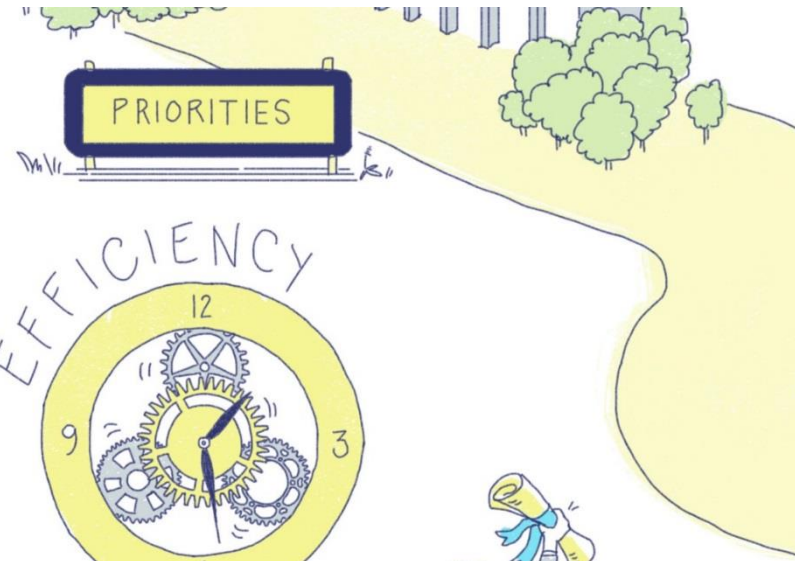
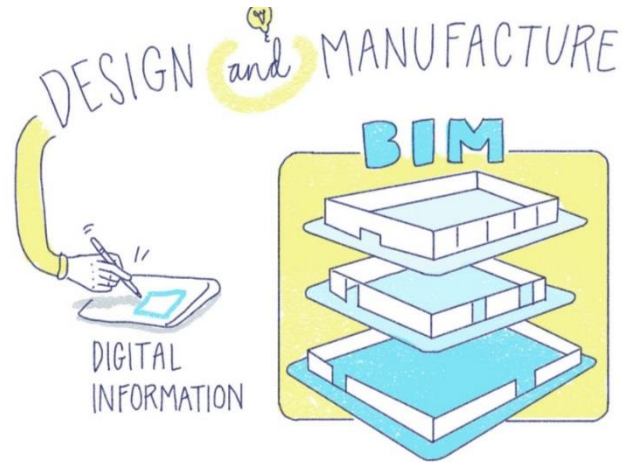


Illustration by Laura Sorvala



